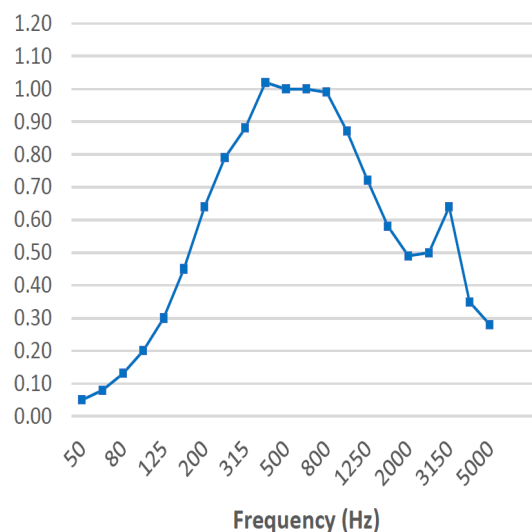


Frequency (Hz) alpha random

50	0.05	
63	0.08	
80	0.13	
100	0.20	
125	0.30	0.30
160	0.45	
200	0.64	
250	0.79	0.75
315	0.88	
400	1.02	
500	1.00	1.00
630	1.00	
800	0.99	
1000	0.87	0.85
1250	0.72	
1600	0.58	
2000	0.49	0.50
2500	0.50	
3150	0.64	
4000	0.35	0.40
5000	0.28	

Sound Absorption Coefficient



**NRC 0.80**

**Open Space: 20%**

Sound prediction carried out by Marshall Day Acoustics software.

Based on 12mm thick panel with Autex AAB 35-50 acoustic backing.

Margin of error is generally within +/- 0.05

Hush Panels offer our acoustic panels in a range of different substrates Inc. Melteca, Veneer and Plywood in either a Group 3 or Group 1S surface rating. Check out our website [www.hushpanels.co.nz](http://www.hushpanels.co.nz) for our full range of products or contact us as we will be happy to help on your next project.

*All designs and information on this sheet remain the property of Hush Panels NZ ©*

**[www.hushpanels.co.nz](http://www.hushpanels.co.nz)**

Ph 0800 487 472 | Email [sales@hushpanels.co.nz](mailto:sales@hushpanels.co.nz)  
Showroom: 64 Beatty Street | Tahunanui | Nelson