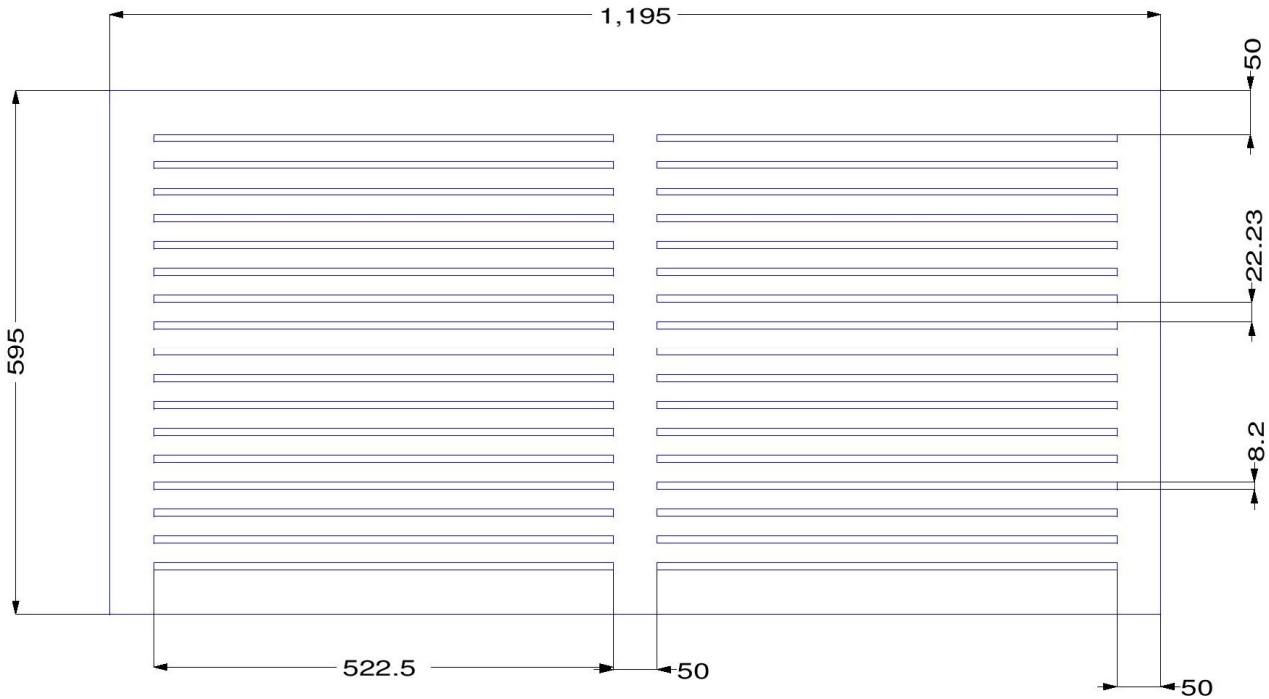


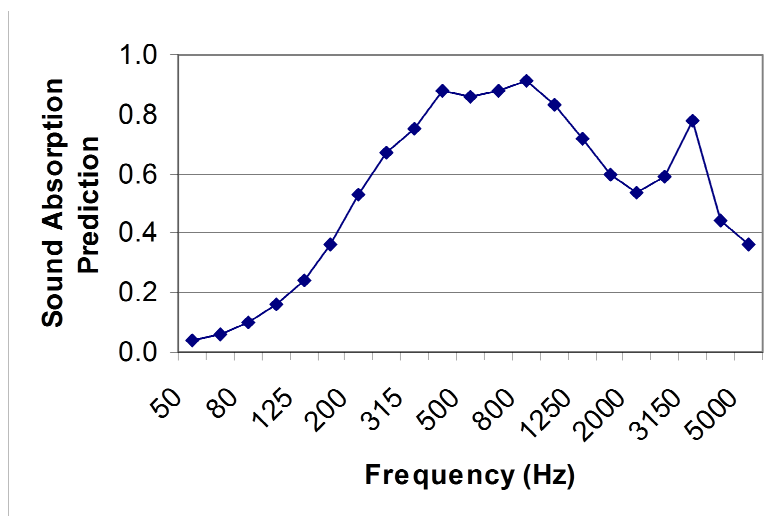
Hush Panels

acoustic and decorative panelling

"The sound decision" C2.17



Sound absorption prediction carried out by [Marshall Day Acoustics](#).
Based on 12mm thick panel with [Autex AAB 35-50](#) acoustic backing.



Frequency (Hz)	alpha random
50	0.04
63	0.06
80	0.10
100	0.16
125	0.24
160	0.37
200	0.53
250	0.67
315	0.75
400	0.88
500	0.86
630	0.88
800	0.91
1000	0.83
1250	0.72
1600	0.60
2000	0.54
2500	0.59
3150	0.78
4000	0.44
5000	0.36

Op

NRC 0.75

www.hushpanels.co.nz

Ph 03 547 0010 / Fax 03 547 0016 / Email joinery@cooperwebley.co.nz

Showroom: 64 Beatty Street, Tahunanui, Nelson

© Hush Panels NZ, 2008